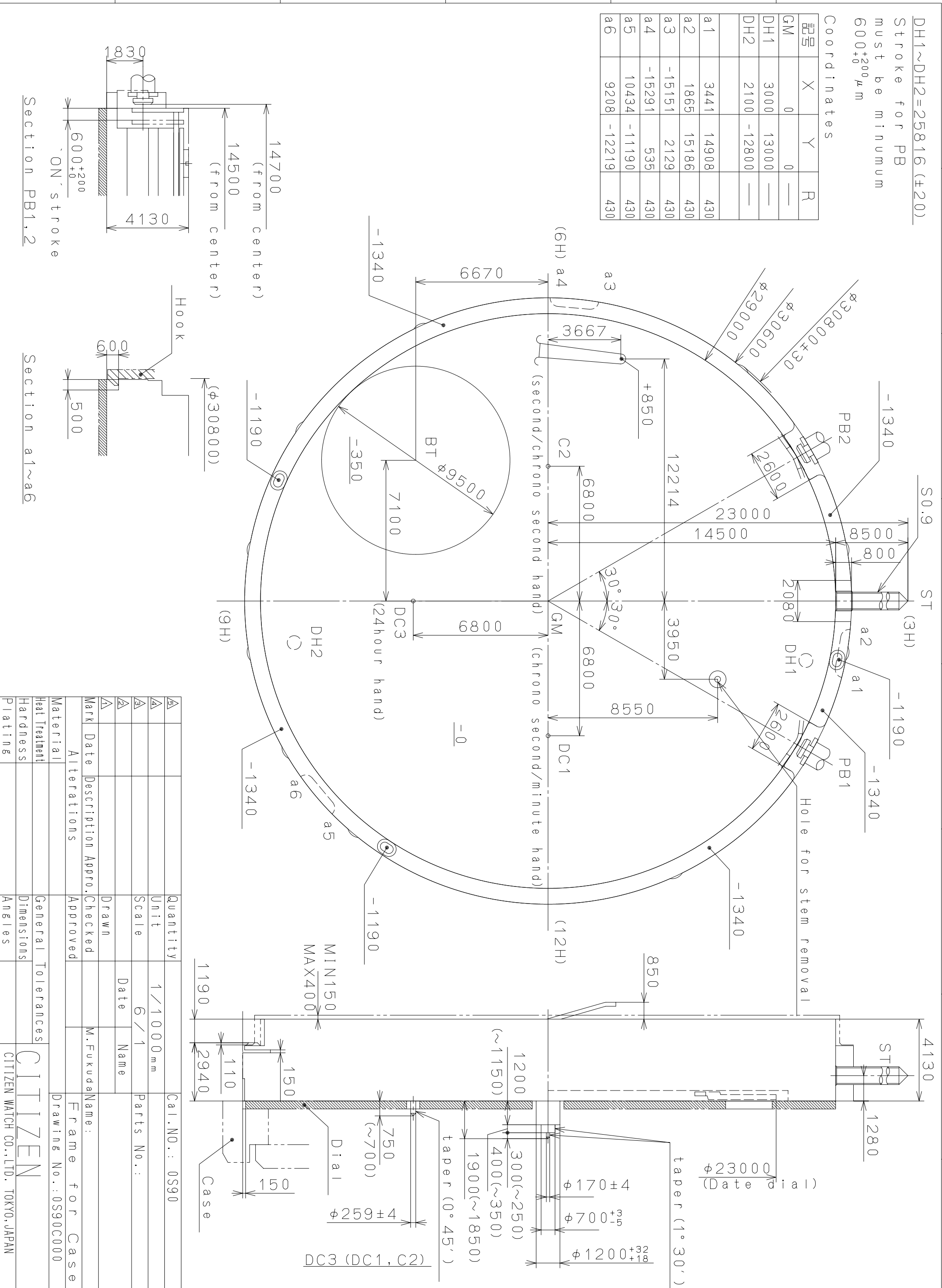


Coordinates			
記号	X	Y	R
GM	0	0	—
DH1	3000	13000	—
DH2	2100	-12800	—
a1	3441	14908	430
a2	1865	15186	430
a3	-15151	2129	430
a4	-15291	535	430
a5	10434	-11190	430
a6	9208	-12219	430

DH1~DH2=25816 (±20)
Stroke for PB must be minimum 600±200 μm

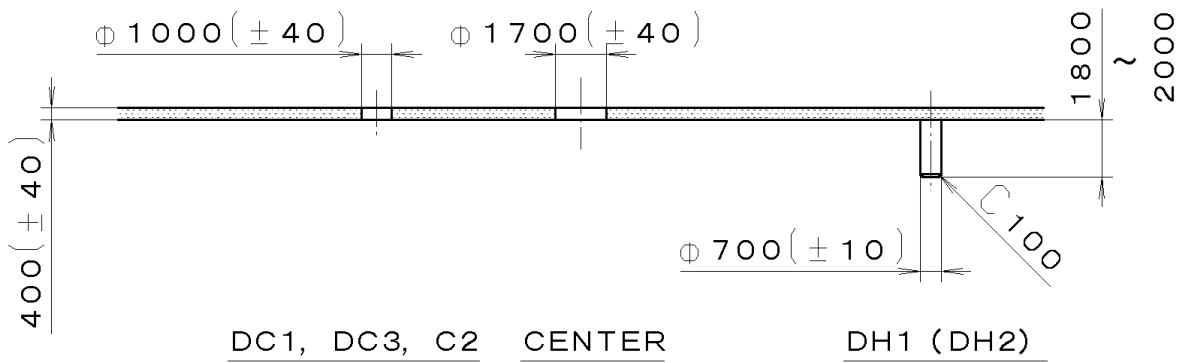
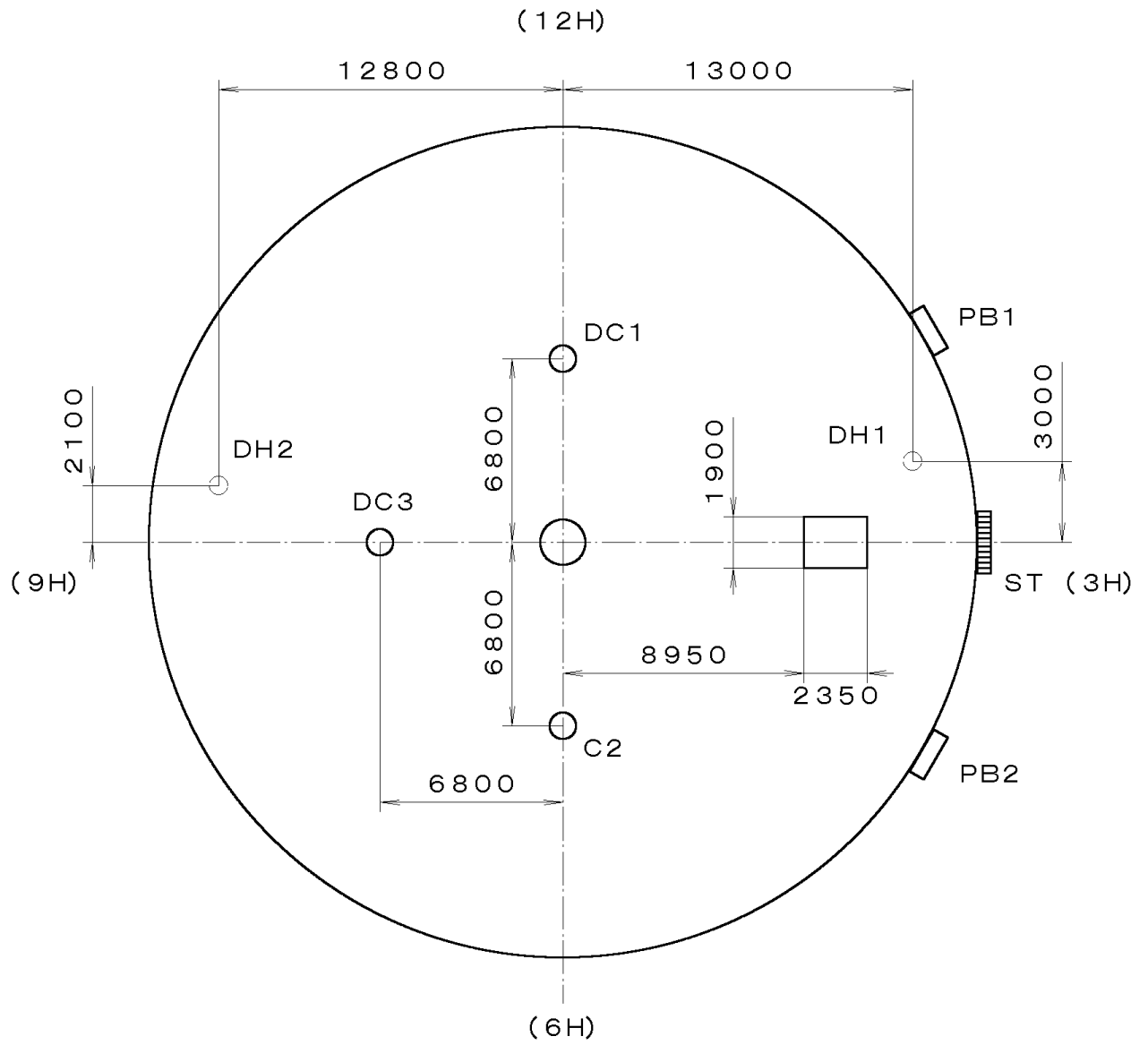


Section PB1,2

Section a1~a6

△	Quantity	1 / 1000 mm	Cal. NO.: 0S90
△	Unit	6 / 1	Parts No.:
△	Scale	Date	Name
△	Drawn	Checked	M. Fukuda
△	Date	Approved	Frame for Case
△	Description	Approved	Drawing No.: 0S90C000
△	Alterations		
△	Material	General Tolerances	CITIZEN
△	Heat Treatment	Dimensions	CITIZEN WATCH CO., LTD. TOKYO, JAPAN
△	Hardness	Angles	
△	Plating		

This drawing is provisional and subject to our reconfirmation and/or revision without notice.

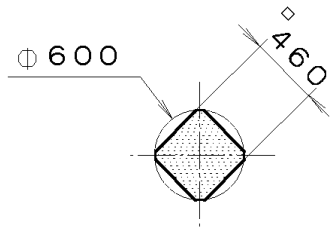


DC1, DC3, C2 CENTER DH1 (DH2)

OS10-00A (01) *** (2100 1121) 00-07-05	7		Quantity		Cal. No. : OS90-00A
	6		Unit	1/1000 mm	
	5		Scale	4:1	Parts:
	4		Date		
	3		Drawn		
	2		Checked	T. Hiruta	Name:
1		Approved		Indications for Dial	
Material					Drawing No. : OS10D000
Heat Treatment			General Tolerances		MIYOTA
Hardness			Dimensions		
Plating			Angles		

This drawing is provisional and subject to our reconfirmation and/or revision without notice.

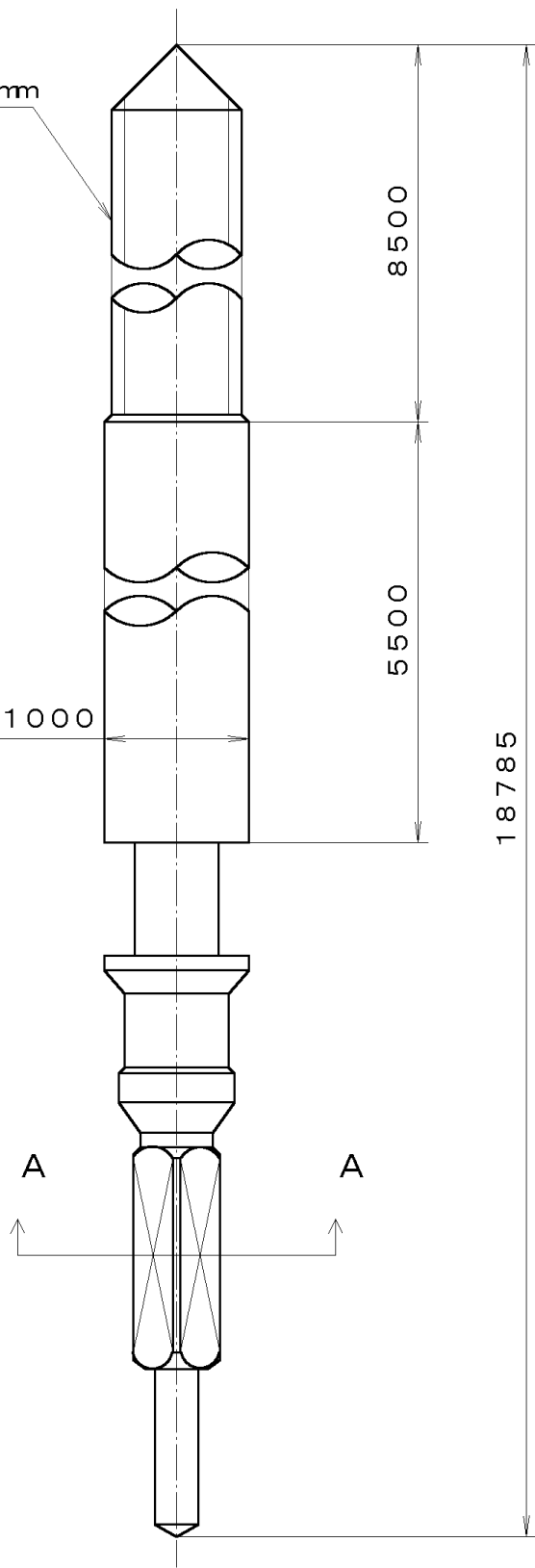
*** T I P W (01) *** (2100 1121) 00-07-05



Section A-A

S0. 9, P=0. 225mm

Ø 1000



7		Quantity		Cal. No. :
6		Unit	1/1000 mm	
5		Scale	20:1	Parts:
4		Date		065-453
3		Drawn		Name:
2		Checked	T. Hiruta	SETTING STEM
1		Approved		Drawing No. : 4530S000
Material				MIYOTA
Heat Treatment		General Tolerances		
Hardness		Dimensions		
Plating		Angles		